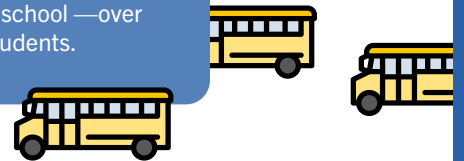
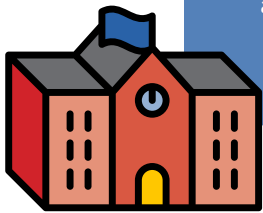


Public Charter Schools Across Tennessee

Tennessee Public Charter Sector

114 public charter schools across Tennessee are a free, public option for students and families.

5% of all public school students in Tennessee attend a public charter school—over 43,000 students.



Tennessee Public Charter Schools are Primarily Concentrated in Metropolitan Areas

NASHVILLE

Total Enrollment: **13,153 students**
Percent of Total District: **16%**
Total Number of Schools: **27**
Number of ASD Schools: **2**
Number of Commission Schools: **3**

KNOXVILLE

Total Enrollment: **442 students**
Percent of Total District: **1%**
Total Number of Schools: **1**

MEMPHIS

Total Enrollment: **19,162 students**
Percent of Total District: **17%**
Total Number of Schools: **57**
Number of ASD Schools: **17**
Number of Commission Schools: **1**

CHATTANOOGA

Total Enrollment: **1,886 students**
Percent of Total District: **4%**
Total Number of Schools: **6**

Source: Tennessee Department of Education, 2022

Six entities acting as local education agencies (LEAs) authorized charter schools in operation during the 2021-22 school year: Hamilton County Schools, Knox County Schools, Metro Nashville Public Schools, and Memphis-Shelby County Schools, along with the state's appellate authorizer—the Tennessee Public Charter School Commission (CSC)—and the state's school turnaround district—the Achievement School District (ASD). Rutherford County also serves as an authorizer, but its first approved school does not open until Fall 2023.

